

# Runway 13/31 Reconstruction Falls International Airport (INL)

## Project Update

August 7, 2019 | Project Update No. 3

### Project Contacts:

**Falls International Airport Manager**  
Thor Einarson  
218.283.4461 (Office)  
Thor@einarsonflying.com

**Short Elliott Hendrickson Inc.**  
**Project Engineer**  
Chelsea Kuchta  
651.900.3662 (Cell)  
ckuchta@sehinc.com

**Short Elliott Hendrickson Inc.**  
**Resident Project Representative (RPR)**  
Ron Rubenzer, PE  
715.790.6621 (Cell)  
rrubenzer@sehinc.com

### Introduction:

This is the third newsletter for the Runway 13/31 Reconstruction project at the Falls International Airport (INL). The purpose of this newsletter is to provide updates throughout the project regarding construction updates, temporary runway conditions, and other information as needed.

### Runway 13/31 Construction Progress (July 25 – August 6)



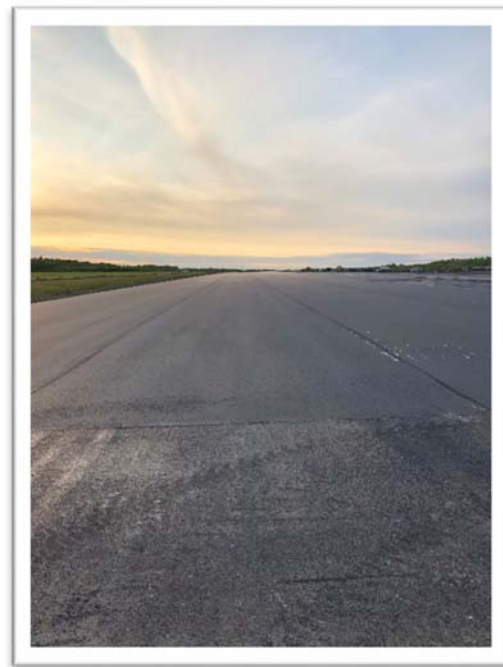
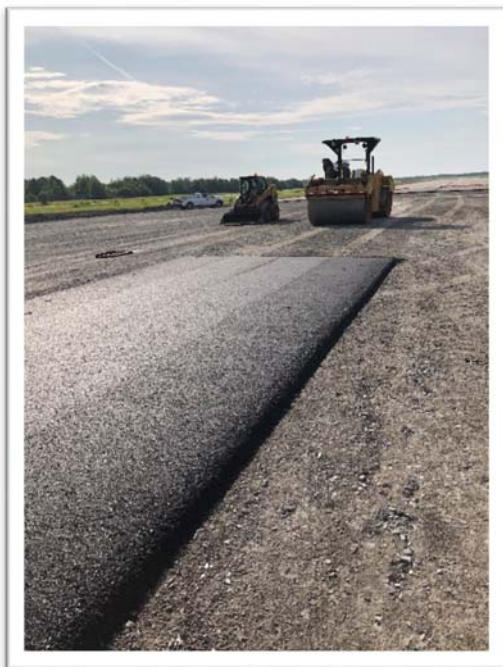
## Inspection Pit and Edge Light Construction

Eight inspection pits were constructed along the runway and taxiway shoulders to create access for inspection to the drain tile system. The edge light cans were placed along the runway and taxiway. This week the runway and taxiway lights will be placed in the lighting cans.



## Pavement

The pavement has been placed along the taxiway and runway in two layers with a tack coat in-between. The base material is a 3 inch layer with an additional 2 inch surface course. An initial test strip was constructed to test density and air void requirements, ensuring quality pavement production and construction. Once these passed the paving crew could continue on to the rest of the paving process. After each day of paving, more tests were taken to ensure the pavement met all specified requirements. Paving took six full days to complete the two levels on the runway, blastpad, and taxiway.



## Remaining Work

In the next week, the conduit for the electrical will be pulled and the lights will be placed and energized. The pavement markings will be laid out and painted on, as well as, removing all temporary markings. There will be turf establishment which includes mulching, fertilizing and seeding all the infield and any other areas disturbed during construction. Sawcut grooves will be cut 30 days after the final layer of pavement was placed.



## Remaining Project Schedule

Despite the runway pavement work being complete, the runway will not open full length until approximately August 16, due to scheduling conflicts with key subcontractors who will paint the new runway and remove the temporary shortened runway markings. The runway is anticipated to be closed during nighttime hours to accommodate the painting and electrical work from August 14<sup>th</sup> to August 16<sup>th</sup>. Check Notice to Airman (NOTAMs) for the latest airfield conditions.